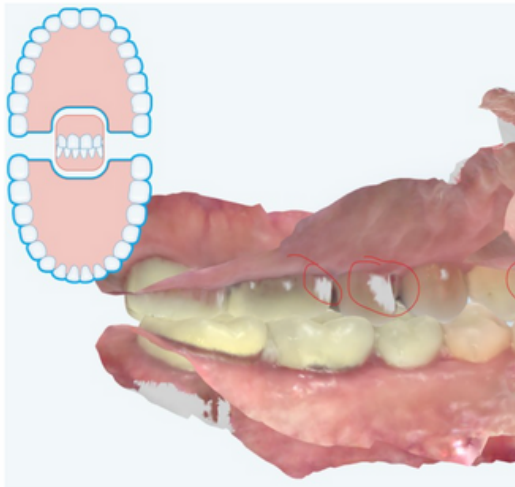


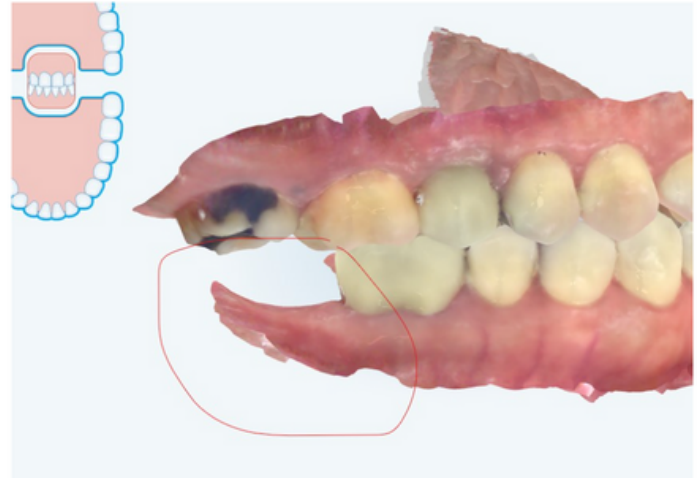
# STL File Export Instructions

## EXPORTING THE STL FILES FROM ITERO OR INTRA ORAL SCANNER

- ☐ Scan on iRecord setting if possible
- ☐ Capture the vestibule and palate
- ☐ Make sure that you have captured the bite scans in correct occlusion. An accurate wax up and planning cannot be done if the bite is not captured correctly. Review scan to check occlusion.
- ☐ Make sure that there are no holes or distortion on the teeth or Palate. Holes or distortion may result in a guide that does not fit. Review the scan for holes/missing information.
- ☐ AI should be turned off to capture posterior ridge for missing 2nd molars. Capture the entire ridge of the edentulous area. Manually trim cheek tissue from obscuring the crowns



**DO NOT LEAVE HOLES  
ON MODEL**



**CAPTURE ENTIRE RIDGE OF EDENTULOUS  
AREA AS FAR BACK AS POSSIBLE**

### DIRECT TRANSFER - SHARING MODELS/ INTRA ORAL SCANS THROUGH YOUR SCANNER

- iTero Lab ID (C&M Surgical Guides) : 414424 [manufacturing@cdental.com](mailto:manufacturing@cdental.com)
- 3Shape/Trios: (C&M Surgical Guides) [manufacturing@cdental.com](mailto:manufacturing@cdental.com)
- DS Core (Prime Scan): [digital@cdental.com](mailto:digital@cdental.com)
- AXS Straumann: [digital@cdental.com](mailto:digital@cdental.com)

# STL File Export Instructions

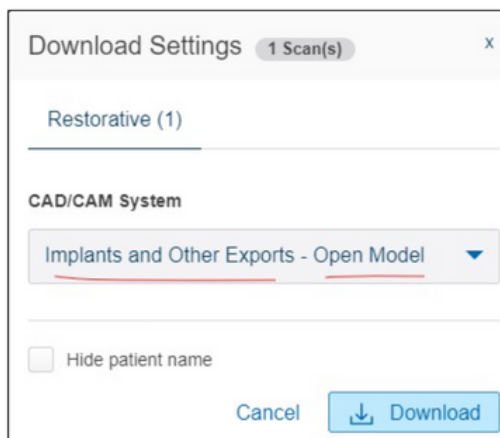
## EXPORTING THE STL FILES FROM ITERO OR INTRA ORAL SCANNER

### OR, TO EXPORT STLS YOURSELF:

Itero Export instructions (For other manufacturers follow your scanner manual or contact your rep.

Use the same export parameters as listed below. Export in STL format)

If the Itero was scanned as restorative, choose Implants and Other exports-Open Model



Choose these options if available



# STL File Export Instructions

## EXPORTING THE STL FILES FROM ITERO OR INTRA ORAL SCANNER

### UPLOADING THE DATA FILES TO C&M

*By uploading the case you are agreeing to C&M service fees for case preparation of your scans for surgical planning. Fee lists are available upon request.*

#### STEP 1

**FILL OUT THE UPLOAD FORM ON THE [WWW.CMSURGICALGUIDES.COM](http://WWW.CMSURGICALGUIDES.COM) WEBSITE**

[Click Here for Upload Page](#)

#### STEP 2

**WAX UPS ARE ENCOURAGED FOR ACCURATE PLANNING. WAX UPS ARE \$25 PER TOOTH. BE SURE TO INCLUDE WAX UP SITES FOR MISSING TEETH IF NEEDED**

#### STEP 3

**CHOOSE ONE OF THE FOLLOWING OPTIONS**

WAX-UP : Virtual Wax-Up - CBCT + Intraoral Scan (indicated to...

NON WAX-UP : Merge DICOM & STL Only

#### STEP 4

**BROWSE TO THE DOWNLOAD FOLDER AND ATTACH THE ORTHOCAD EXPORT FOLDER THAT YOU EXPORTED FROM [WWW.MYITERO.COM](http://WWW.MYITERO.COM)**

*See page 1 for export instructions.*

Attachment - Please zip STL files into one folder and use the patient name as the title of the folder\*

Drag and drop files here

Browse

#### STEP 5

**MAKE SURE TO SELECT THE ONE WITH THE DATE AND TIME THAT YOU EXPORTED THE FILE**

> This PC > Downloads

Name

Date modified

▼ Today

OrthoCAD\_Export\_111019404

11/9/2022 10:07 AM

#### STEP 6

**Make sure to HIT SUBMIT**



If you have any questions, please contact our Sara Tarazi - Chief Technologist

✉ [starazi@cdental.com](mailto:starazi@cdental.com)

☎ 510-368-7240