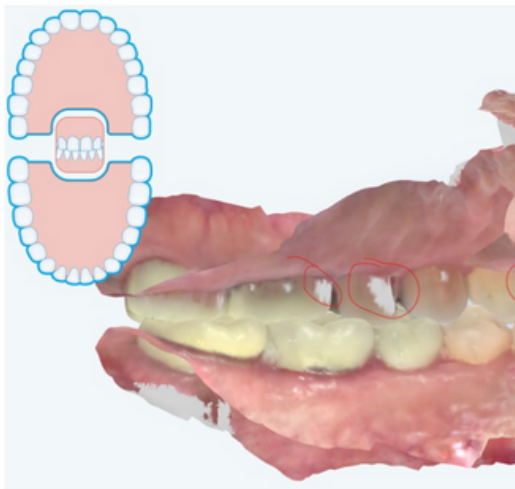


STL File Export Instructions

EXPORTING THE STL FILES FROM ITERO OR INTRA ORAL SCANNER

- Scan on iRecord setting if possible
- Capture the vestibule and palate
- Make sure that you have captured the bite scans in correct occlusion. An accurate wax up and planning cannot be done if the bite is not captured correctly. Review scan to check occlusion.
- Make sure that there are no holes or distortion on the teeth or Palate. Holes or distortion may result in a guide that does not fit. Review the scan for holes/missing information.
- AI should be turned off to capture posterior ridge for missing 2nd molars. Capture the entire ridge of the edentulous area. Manually trim cheek tissue from obscuring the crowns



HOLES ON MODEL



CAPTURE ENTIRE RIDGE OF EDENTULOUS AREA AS FAR BACK AS POSSIBLE

ITERO SCANS - SHARE CASE DIRECTLY THROUGH ITERO MACHINE

- iTero Lab ID (C&M Surgical Guides) : 414424 manufacturing@cdental.com
- Make a note on the form submission that you shared the IOS through Itero directly
- Make sure to attach zipped DICOM to [C&M upload form](#) see upload instructions on page 3

STL File Export Instructions

EXPORTING THE STL FILES FROM ITERO OR INTRA ORAL SCANNER

3SHAPE SCANS: SHARE CASE DIRECTLY THROUGH TRIOS MACHINE

- 3shape share Trios files to C&M Surgical Guides, inc manufacturing@cdental.com

OR, TO EXPORT STLS YOURSELF:

If the iTero was scanned as restorative, choose Implants and Other exports-Open Model

Download Settings 1 Scan(s) x

Restorative (1)

CAD/CAM System

Implants and Other Exports - Open Model

Hide patient name

Cancel Download

Choose these options if available

Export Type Open Shell

Data Format File per Arch (arches oriented in occl...

File Type STL+PLY

Hide patient name

Cancel Export

STL File Export Instructions

EXPORTING THE STL FILES FROM ITERO OR INTRA ORAL SCANNER

UPLOADING THE DATA FILES TO C&M

By uploading the case you are agreeing to C&M service fees for case preparation of your scans for surgical planning. Fee lists are available upon request.

STEP 1

FILL OUT THE UPLOAD FORM ON THE WWW.CMSURGICALGUIDES.COM WEBSITE

[Click Here for Upload Page](#)

STEP 2

WAX UPS ARE ENCOURAGED FOR ACCURATE PLANNING. WAX UPS ARE \$25 PER TOOTH. BE SURE TO INCLUDE WAX UP SITES FOR MISSING TEETH IF NEEDED

STEP 3

CHOOSE ONE OF THE FOLLOWING OPTIONS

WAX-UP : Virtual Wax-Up - CBCT + Intraoral Scan (indicated to...)

NON WAX-UP : Merge DICOM & STL Only

STEP 4

BROWSE TO THE DOWNLOAD FOLDER AND ATTACH THE ORTHOCAD EXPORT FOLDER THAT YOU EXPORTED FROM WWW.MYITERO.COM

See page 1 for export instructions.

Attachment - Please zip STL files into one folder and use the patient name as the title of the folder*

Drag and drop files here

Browse

STEP 5

MAKE SURE TO SELECT THE ONE WITH THE DATE AND TIME THAT YOU EXPORTED THE FILE

> This PC > Downloads

Name

Date modified

▼ Today

📁 OrthoCAD_Export_111019404

11/9/2022 10:07 AM

STEP 6

Make sure to HIT SUBMIT



If you have any questions, please contact our Sara Tarazi - Chief Technologist

✉ starazi@cdental.com

☎ 510-368-7240